

The discovery of working carers - a new policy challenge in Sweden

*Lennarth Johansson, Associate professor
Stockholm Gerontology Research Center*

The Swedish LTC at a glance

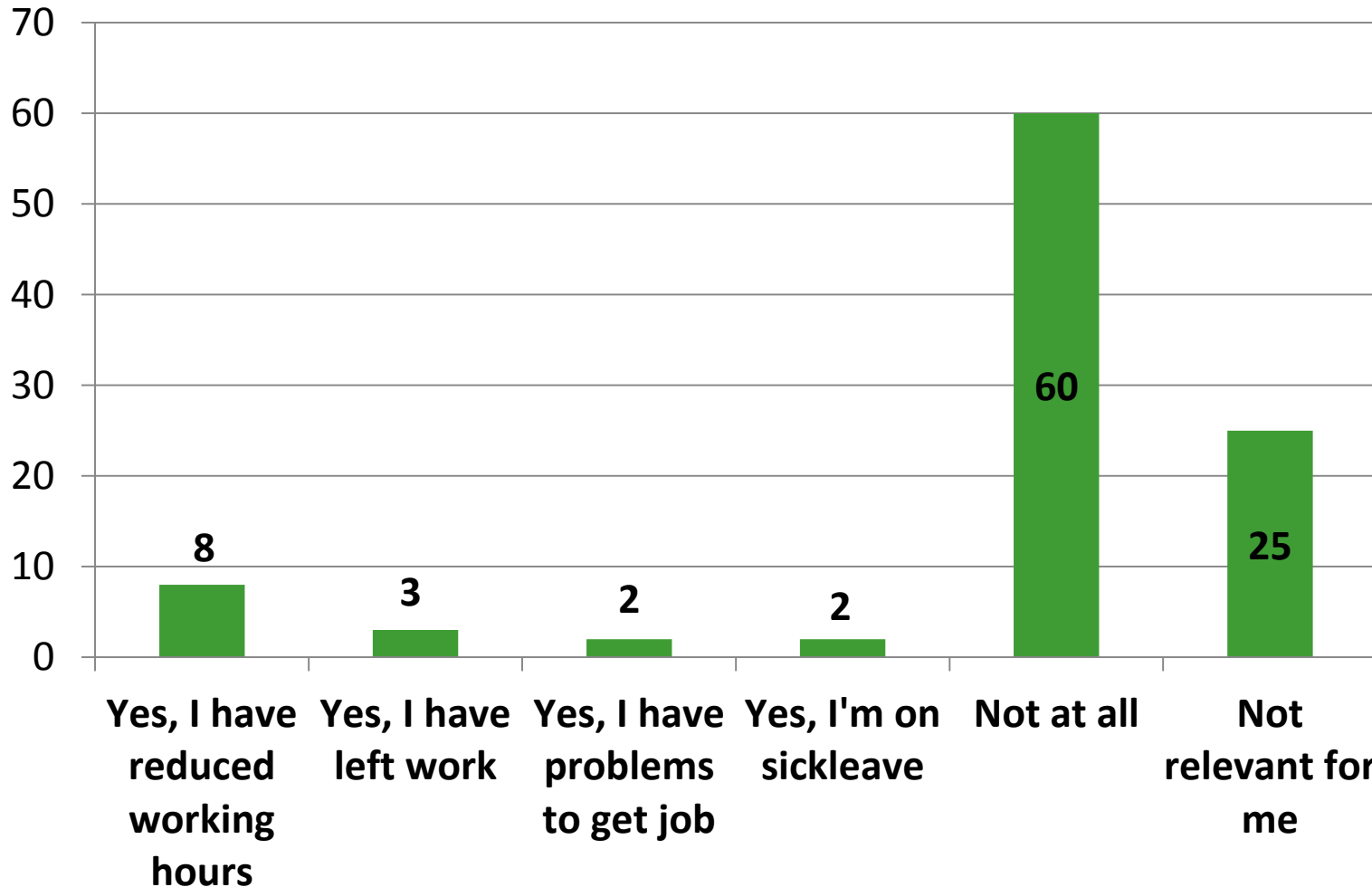
- **Ageing in place**
- **Based, driven and financed by the 290 municipalities and the 21 counties and regions**
- **Eligibility is needs based, not means-tested**
- **Service levels, eligibility and range of services provided, is decided by local governments**
- **There are no statutory requirements for children to provide care or economic security for their elderly**



“Do you regularly help, support or care for someone who needs help with daily chores, personal care or other support due to high age, disability or sickness”

	Yes (%)	No (%)	Total (%)	N
TOTAL	18	82	100	8 202
Gender				
Women	20	80	100	4 382
Men	16	84	100	3 820
Age				
18–29 yrs	12	88	100	902
30–44 yrs	13	87	100	1 655
45–64 yrs	24	76	100	2 926
65–80 yrs	19	81	100	2 125
81- yrs	15	85	100	594

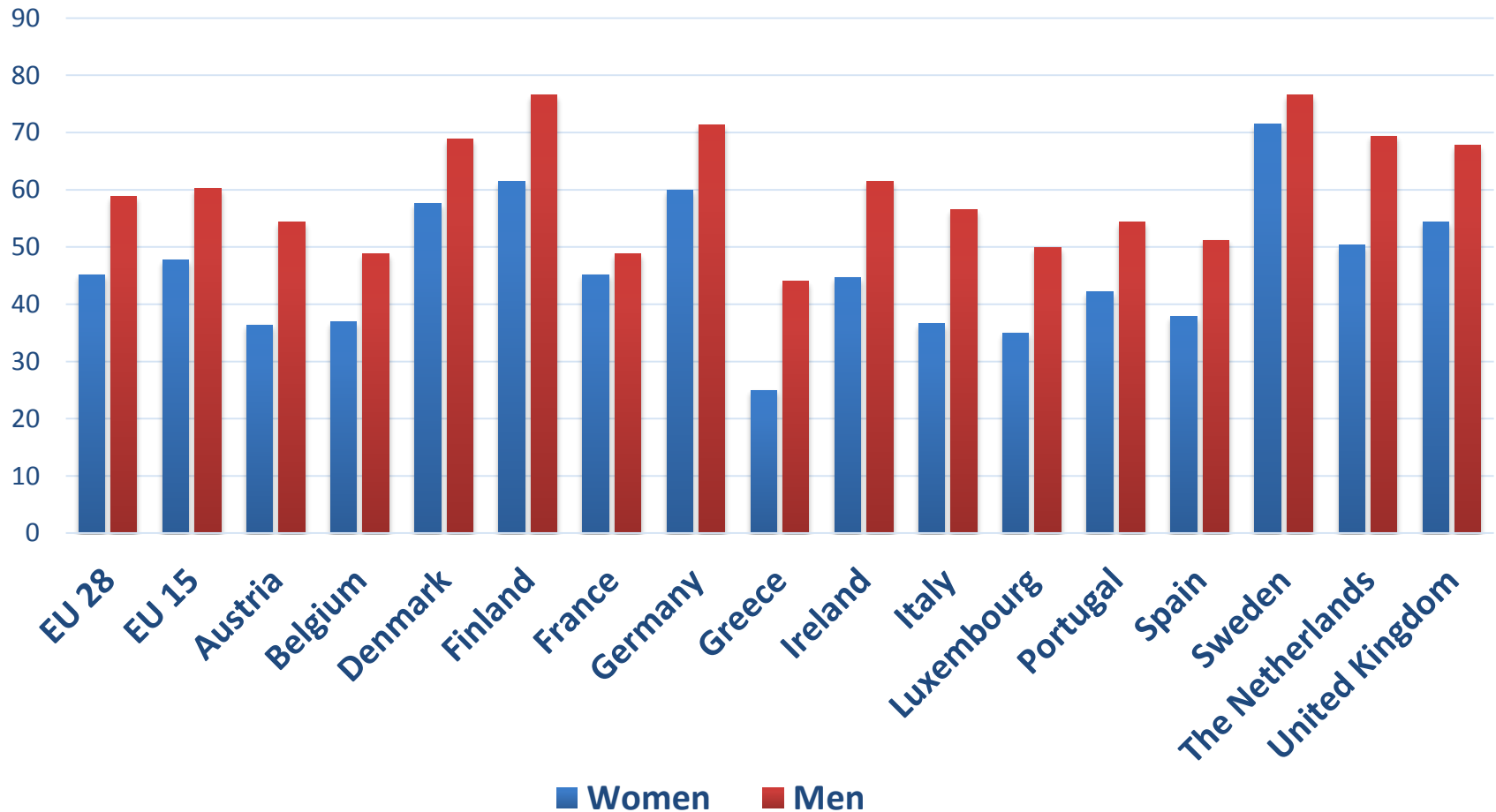
”Has caring affected your work?”



”Has caring affected your work?”

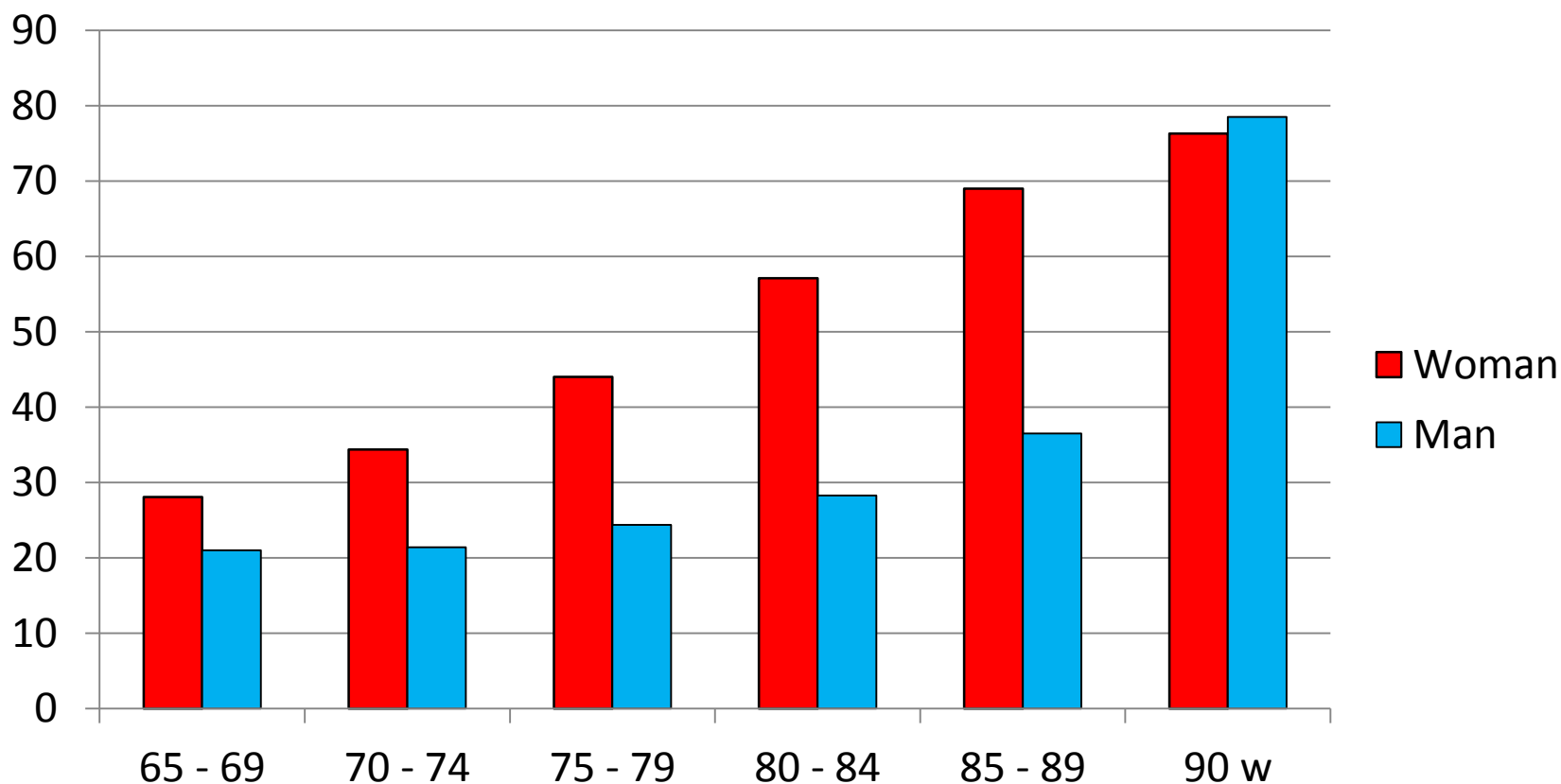
	Yes, I've reduced working hours	Yes, I've left work	Yes, I've had problems to get work	Yes, I'm on sick leave	Not at all	N
TOTAL	11	5	3	2	80	834
Gender						
Women	14	5	3	3	76	473
Men	8	4	2	1	84	361
Age						
18–29 yrs	3	2	3	0	93	68
30–44 yrs	17	5	3	4	71	157
45–64 yrs	10	5	3	2	81	493
65–80 yrs	14	6	2	1	78	106
81– yrs	0	0	0	0	100	10

Employment rates of men and women aged 55 -64 years, 2014 (%)



Source: Eurostat, Labour Force Survey (LFS), 2015

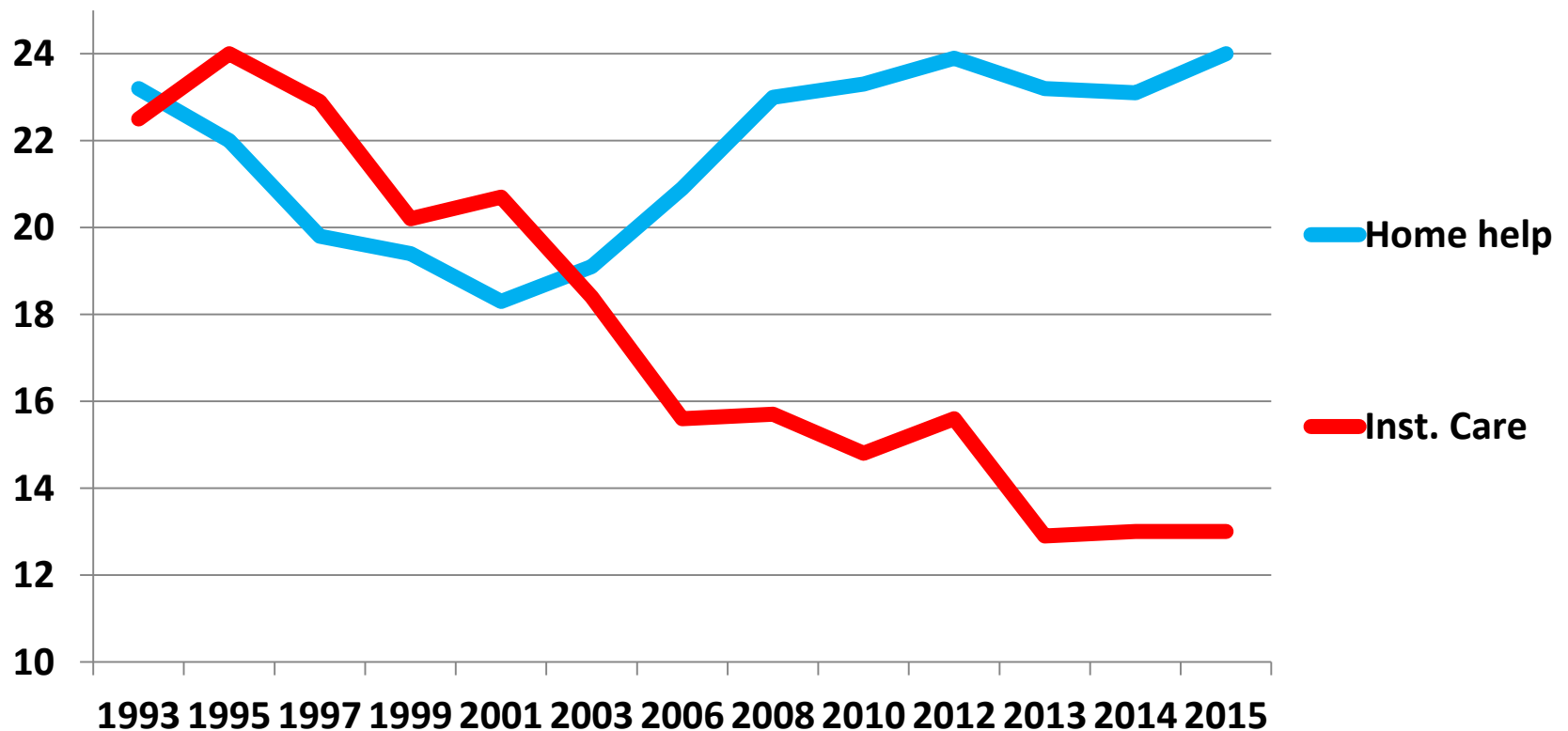
Living alone, by gender and age, 2014 (%)



Source: Statistics Sweden.

Development of access to LTC

Coverage LTC, people 80+, 1993-2015 (%)



Carers and social legislation



- “Social services is obliged to provide support to persons who care for next of kin with chronic illnesses, elderly people or people with disabilities” (Social Services Act, 2009)
- Anyone who identifies themselves as being "a person who cares for next of kin" may apply, There are no regulations regarding the amount of help a caregiver must provide to qualify.
- The law doesn't specify the content or quality of the support that the municipalities are obligated to provide.

Support programmes for family carers

CASH		BENEFITS IN KIND	
Leave schemes	Allowance	Direct Support	Indirect Support
Care leave	Attendance allowance	Information & advice	Home help
	Carer's allowance	Counselling	Day care
		Training/education	Institutional respite
		Support groups	Home health care
		In - home respite	Assistive devices
		Assistive devices	Housing adaptations
			Institutional care

Policy Responses!?

- Paid Leave
- Cash
- Flexible working conditions
- Service and care

