

A 55 year panorama of care received and given by older Swedes

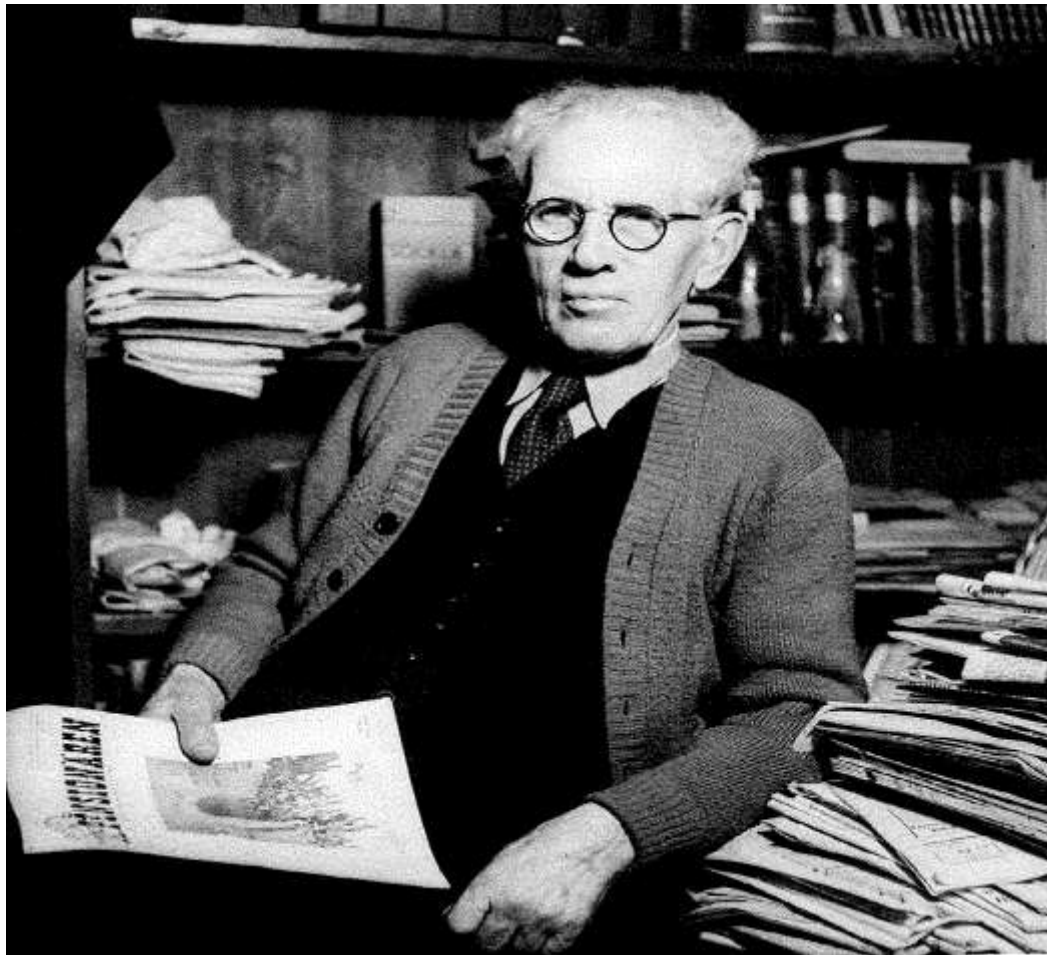
Gerdt Sundström, Swedish Federation of Retired
Persons (SPF) & Institute of Gerontology

Lennarth Johansson, Socialstyrelsen (The National
Board of Health and Welfare)

Bo Malmberg, Institute of Gerontology

Organizing the seniors: For better pensions and housing, and for community care rather than abhorred old-age homes and poor-houses. SPF established in 1938 by sailors and stevedores, many of them socialists.

Organizer and editor of the first SPF magazine



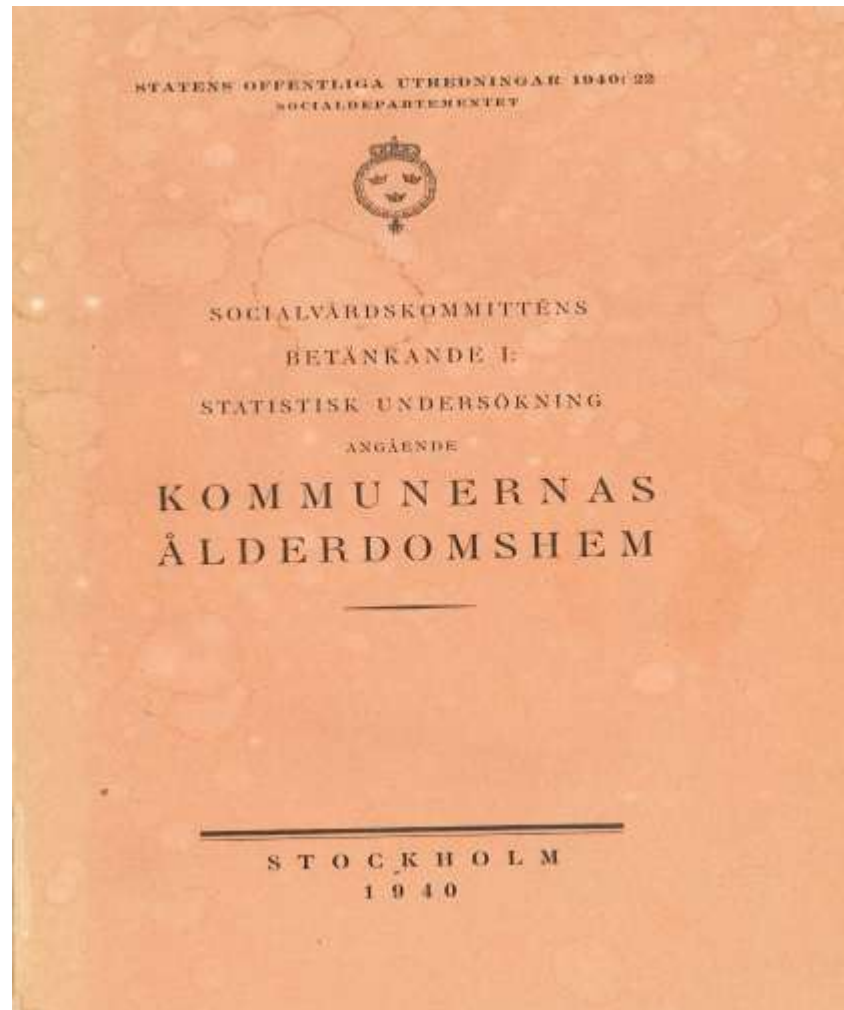
Marketing SPF and the magazine...



And today's version... (see www.spf.se)



Government inventory of old-age homes: standards, user profiles, client turnover, pocket money etc.



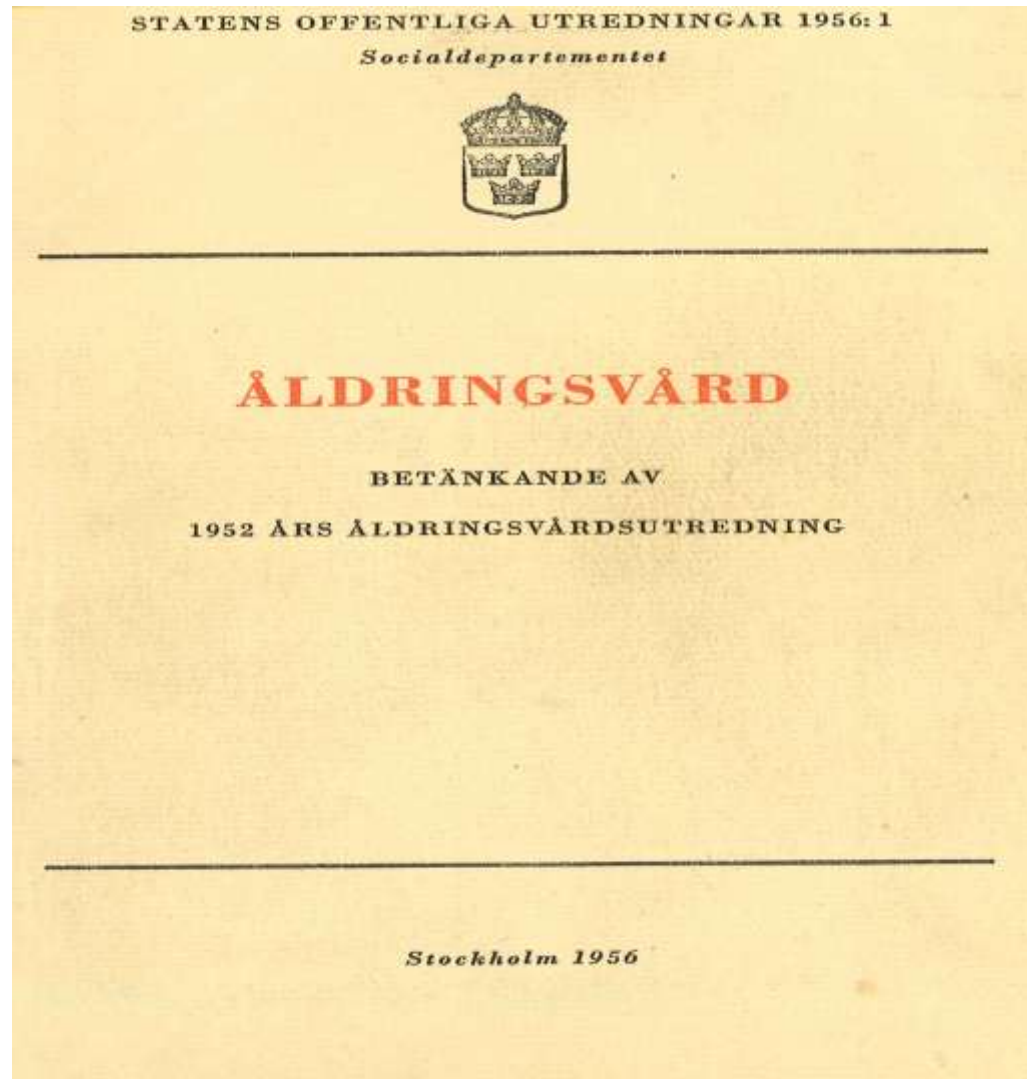
An old-age home in Stockholm in 1948...



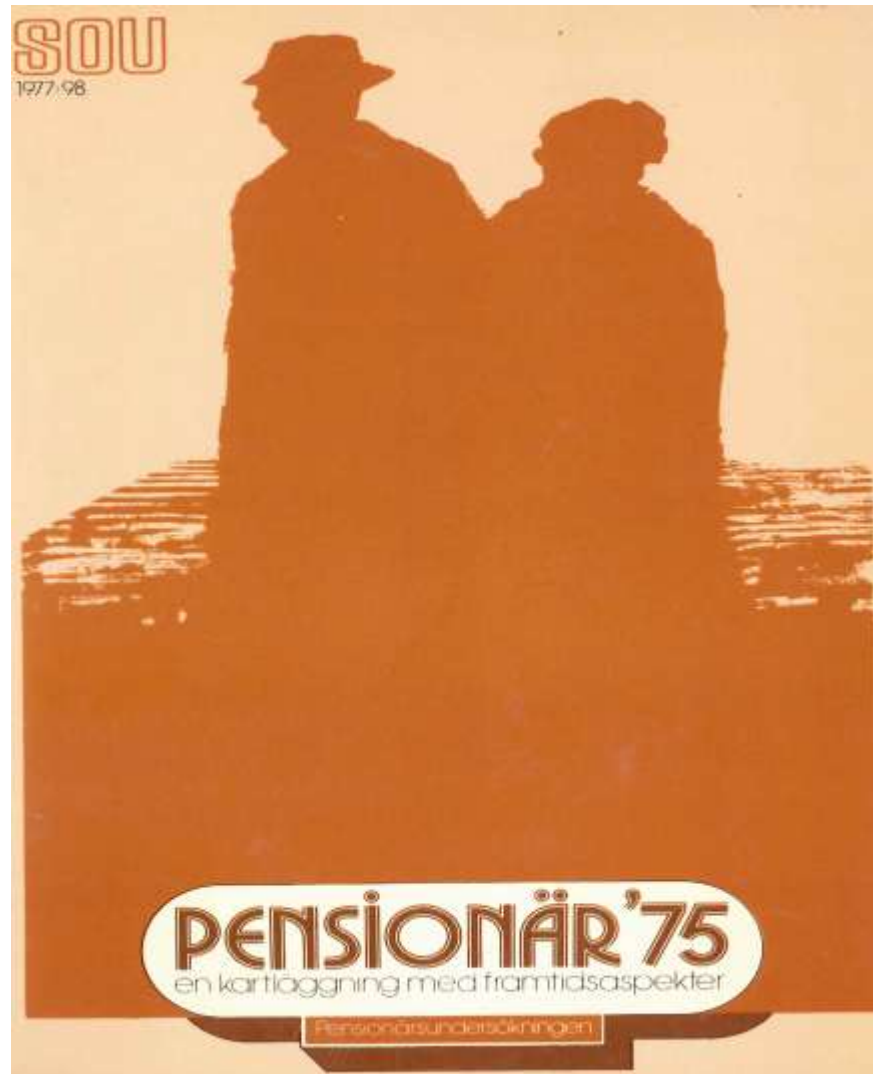
“Waiting for the coffee...”



After criticism of institutional bias in services in 1940s and scandals of abuse of inmates in the 1950s: Government commission and survey of older persons living in the community and their needs



Affluent 70s: new criticisms, grandiose ambitions, expanding services, new government commissions and surveys



Panorama of *needs* of older people

Table 1. Needs for help among older* Swedes, 1954-2009. Per cent

Year	1954	1975	1988/89	2002/03	2009
Needs help	est. 42**	est. 45	32	25	22
W hhd tasks	--	25-58***	32	23	21
W personl care	--	10****	7	6	6
Gets too little help*****	9	9	1	2	1

*Persons living in the community 65+, in 1954 67+

**Persons who do at most 1 daily task themselves *and* receive help with 2-3 daily tasks (SOU 1956:1 p. 236).

***25 % need help with shopping, 58 % with big laundry, other household chores intermediate rates (cooking 27 %, cleaning 42 %).

****Needs help with personal hygiene

*****including no help

Panorama of *care* of older people

Table 2. Patterns of care among older* Swedes, 1954 - 2009. Per cent

Year	1954	1975	1988/89	2002/03	2009
Needs help	42	45	32	25	22
Gets <i>informal</i> care	--	36	23	18	19
<i>whereof</i> - in hhld	---	---	13	8	8
- from outside hhld	---	---	12	12	14
<i>Formal</i> care (hemtjänst)	1	17	13	10	9
<i>Both</i>	---	8**	6	6	8

*Persons living in the community 65+, in 1954 67+

** Stockholm: hemtjänst (Home Help) *and* help from children 1976/77 (after Sundström 1983).

Panorama of *care-giving* among older persons

Table 3. Care-giving among older* Swedes, 1954 - 2009. Per cent

Year	1954	1975	1988/89	2002/03	2009
<i>Give care</i>	(2*)		20** (1994)	21	19
Cares for partner	---	---	---	4	4
Gives daily help	---	---	---	5	5
Older pop. 65+	721.000	1.251.000	1.510.000	1.537.000	1.691.000

*Persons living in the community 65+, in 1954 67+

* "gives substantial help to person in other household" (SOU 1956:1)

**After Busch Zetterberg 1996; similar rates are reported by Jeppsson Grassman 1993.

Panorama of public service use

**Table 4. User rates of public services among older* Swedes, 1954 – 2009.
Per cent**

Year	1954	1975	1988/89	2002/03	2009
Institutional care	6	9	8	7	6
Home Help	1	17	13	10	9
Other services, but not Home Help	-	?	?	ca. 8	ca. 8
Total	7	25	?	ca. 25	ca. 23**
Before death, use of <i>any</i> public service***	ca. 15	ca. 50		ca. 90	

Sources: SOU 1956:1, SOU 197977:100 with our own elaborations, computations on ULF/Statistics Sweden, official statistics, the Dalby surveys, H70 and the Kungsholmen surveys.

*Persons living in the community 65+, 1954: 67+

** Ca. 7 % use home health care but *no* Home Help (Sundström et al. 2011).

*** Source: XX and Larsson & Thorslund 20##

Note: in 2011 5 % of older persons were institutionalized and 9 % used Home Help

Conclusions

Cost containments: 5 % of GDP spent on older persons in 1950 (all public expenses except acute health care: pensions, housing allowances, institutional care, services), 14 % in 1980s/90s. No later increase. Formal care today uses 3 % of GDP: no increase in real terms since 1990s.

Rationing of services: later and less, but today reach out to (nearly) all older persons over the life course.

Diversification of services: coverage upheld.

Relative, and maybe absolute, increase of **family care**.

Municipalities mandated to offer support to carers.